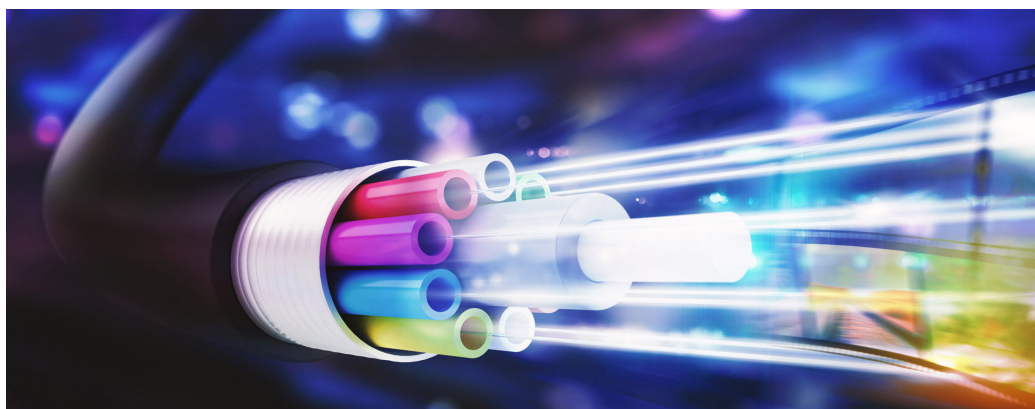


# NCDOT BROADBAND INFRASTRUCTURE NORTH CAROLINA, USA

Major Equity Member  
Lead Developer  
Asset Manager

<b>Location</b>	USA
<b>Client</b>	North Carolina Department of Transportation (NCDOT)
<b>Operations and Maintenance Contractor</b>	Tilson Technology Management, Inc: <a href="http://www.tilsontech.com">www.tilsontech.com</a>
<b>Equity Investor and Commercialization Manager</b>	Tilson Infrastructure: <a href="http://www.tilsontech.com">www.tilsontech.com</a>
<b>Commercial Close</b>	October 2021
<b>Contract terms</b>	~30 years (25 years + ~5 year construction period), with options to extend



The project involves a long-term partnership between Plenary Broadband Infrastructure (PBI) and NCDOT, whereby PBI will operate, maintain, and commercialize a fiber-optic network that will extend along ~580 miles of the North Carolina I-95, U.S. 70, and U.S. 74 corridors.

In addition to commercializing excess fiber capacity along the route, PBI will operate and maintain the NCDOT-owned network and associated assets that will provide connectivity for NCDOT's administrative buildings and offices, maintenance buildings, and Intelligent Transportation Systems, among other sites and applications.

## INNOVATIONS

The NCDOT Broadband Infrastructure project is one of the first fiber network revenue-risk transactions in the P3 market. This innovative model will allow NCDOT to leverage P3 risk-transfer and benefit from effective management and availability of its critical network and ITS assets, while at the same time establishing an ongoing revenue stream from the commercial value of fiber infrastructure installed within its right-of-way, offsetting the operating and maintenance costs to manage this network.

## LOCAL ECONOMIC IMPACTS

PBI's commercial network will facilitate increased connectivity throughout North Carolina, including establishing a robust, new network adjacent to unserved and underserved communities, effectively establishing an open access network with significant capacity and reach. PBI also plans to develop wireless network infrastructure that will facilitate emerging technologies and deliver economic benefits to the region. Existing and new businesses in proximity to the Project will have new options for network capacity to serve their rapidly evolving data and telecommunication needs.

## COMMUNITY BENEFITS

PBI's activities on the Project will provide long-term opportunities for local resources in order to support the delivery of its O&M and commercialization services, as well as to deploy new infrastructure and continuously expand the network services. Further, increased network capacity that is managed on a neutral basis will allow communities in the region to facilitate the key services that are critical to establishing and maintaining healthy economies, including healthcare, education, and job creation.